

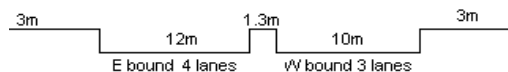
YEAR 2013

COVERAGE (B) STATION 4217

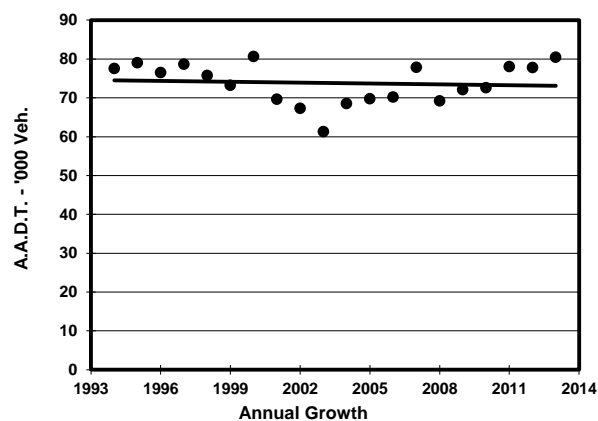
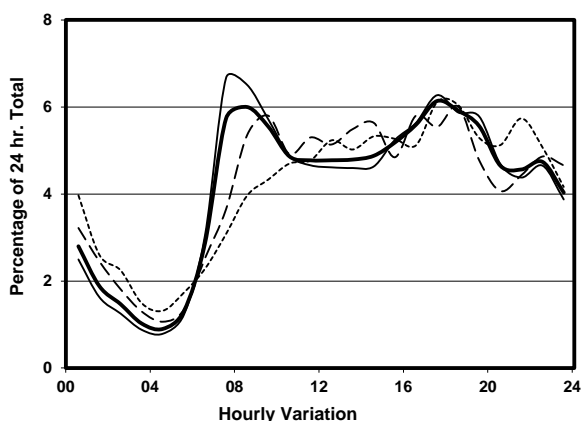
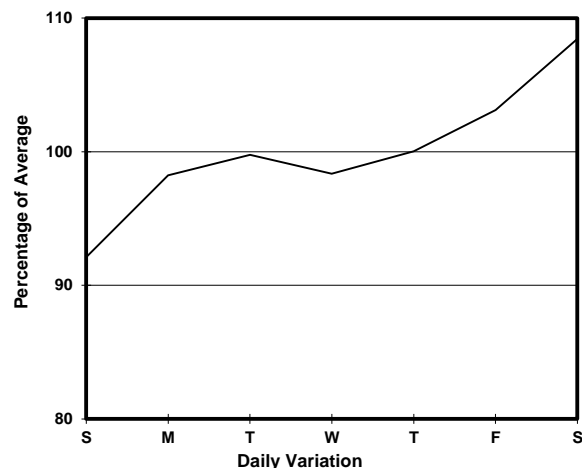
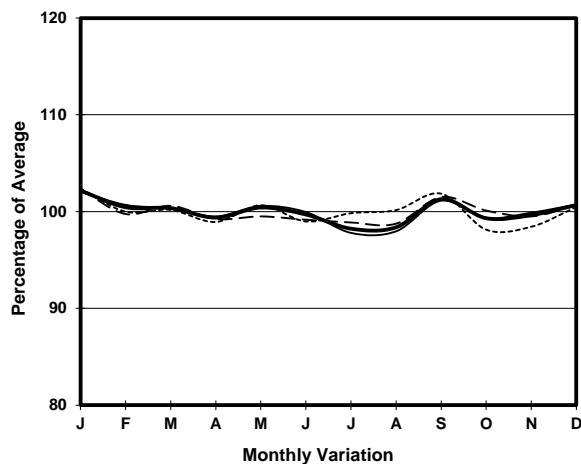
ROAD NETWORK MAJOR

ROAD TYPE PRIMARY DISTRIBUTOR

LINK CLEAR WATER BAY RD (from LUNG CHEUNG RD to
NEW CLEAR WATER BAY RD WESTERN JUNCTION)



1. TRAFFIC FLOW VARIATION AND GROWTH



2. TRAFFIC CHARACTERISTICS (BY DIRECTION)

Parameter	All - Day	Mon. - Fri.	Sat.	Sun.
EAST BOUND				
A.A.D.T.	45340	45370	49270	42480
R 12 / 24 - %	61.5	62.4	61.1	57
R 16 / 24 - %	83	84.1	80.9	79.4
AM Peak Hour	0800-0900	0700-0800	0900-1000	0800-0900
One-way flow at AM peak hour	2400	2640	2520	1640
T - % (AM)	-	14.8	-	-
PM Peak Hour	1800-1900	1800-1900	1800-1900	1700-1800
One-way flow at PM peak hour	2910	2960	3050	2680
T - % (PM)	-	5.4	-	-
Prop.of commercial vehicles - 16 hr.	-	9.8	-	-
WEST BOUND				
A.A.D.T.	35130	35320	38310	31960
R 12 / 24 - %	67.7	69.1	66.6	61.7
R 16 / 24 - %	84.6	85.7	82.6	81.3
AM Peak Hour	0800-0900	0700-0800	0900-1000	0900-1000
One-way flow at AM peak hour	2430	2740	2560	1600
T - % (AM)	-	10	-	-
PM Peak Hour	1700-1800	1700-1800	1700-1800	1800-1900
One-way flow at PM peak hour	2250	2330	2310	1920
T - % (PM)	-	10	-	-
Prop.of commercial vehicles - 16 hr.	-	9.8	-	-

3. OTHER INFORMATION AND COMMENT

4. Vehicle classification and occupancy - Monday to Friday

Time		Class of vehicle									
		Motor Cycle	Private Car	Taxi	Private LB	PLB	Goods veh.		Non Fr. Bus	Fr. Bus	
							Light	M & H		SD	DD
0700-0800 Peak hour	Pro	3.4	39.0	16.3	3.9	13.5	11.9	4.5	3.5	0.1	4.0
	Ocp	1.1	1.6	2.1	6.2	12.1	1.7	1.3	14.9	3.3	38.2
0800-0900	Pro	4.8	47.8	14.0	2.4	10.8	10.5	4.2	2.8	0.1	2.6
	Ocp	1.1	1.4	1.9	5.9	13.6	1.7	1.3	13.9	8.7	40.0
0900-1000	Pro	4.1	39.3	14.7	2.1	12.0	16.6	6.2	1.6	0.0	3.6
	Ocp	1.1	1.4	2.0	2.4	11.7	1.6	1.2	17.3	0.0	19.5
1000-1100	Pro	3.1	32.4	20.2	1.4	11.1	18.9	8.3	1.4	0.1	3.2
	Ocp	1.1	1.4	2.0	2.3	10.7	1.5	1.1	2.7	5.0	21.8
1100-1200	Pro	3.0	34.8	21.7	1.5	11.0	16.8	5.4	1.6	0.1	4.2
	Ocp	1.1	1.4	2.0	1.5	10.8	1.4	1.1	6.4	7.0	27.7
1200-1300	Pro	1.8	37.8	18.6	4.6	11.9	12.6	6.9	2.0	0.1	3.8
	Ocp	1.1	1.6	2.0	6.1	9.2	1.7	1.2	7.2	5.0	20.3
1300-1400	Pro	4.2	31.9	19.4	2.0	11.5	15.9	8.8	2.0	0.1	4.2
	Ocp	1.1	1.5	2.0	2.5	9.3	1.4	1.3	10.1	3.5	19.7
1400-1500	Pro	3.1	35.2	16.3	0.6	8.7	22.3	7.7	2.3	0.1	3.6
	Ocp	1.0	1.5	2.0	3.8	8.9	1.6	1.2	21.1	7.5	20.0
1500-1600	Pro	2.9	33.9	18.8	3.7	9.8	16.1	6.5	4.1	0.1	4.3
	Ocp	1.0	1.5	1.9	4.8	12.0	1.6	1.1	13.0	13.0	20.7
1600-1700	Pro	3.2	35.6	18.1	4.2	10.3	16.3	3.6	5.3	0.1	3.4
	Ocp	1.1	1.6	1.9	4.2	14.4	1.6	1.1	9.9	13.5	30.7
1700-1800	Pro	6.3	39.0	17.0	1.9	11.9	13.9	4.0	2.9	0.1	3.2
	Ocp	1.1	1.6	2.3	4.7	13.7	1.8	1.2	8.7	24.0	35.4
1800-1900	Pro	4.8	50.1	16.7	0.3	12.5	10.1	1.3	1.0	0.1	3.2
	Ocp	1.1	1.6	2.3	3.0	12.4	1.7	1.1	20.9	44.0	41.3
1900-2000	Pro	4.0	52.8	19.5	0.3	13.9	5.5	0.3	0.8	0.1	2.9
	Ocp	1.2	1.5	2.1	1.7	10.7	1.5	1.0	4.6	12.7	29.2
2000-2100	Pro	4.1	41.7	29.5	0.4	11.9	7.8	0.7	0.6	0.1	3.4
	Ocp	1.1	1.6	2.0	2.0	9.5	1.7	1.3	1.0	38.0	22.9
2100-2200	Pro	4.4	40.1	33.4	0.1	12.0	5.0	1.0	0.4	0.1	3.5
	Ocp	1.1	1.5	1.9	2.0	9.2	1.7	1.1	3.3	9.0	21.5
2200-2300	Pro	4.0	42.0	31.3	0.0	13.5	4.7	0.6	0.4	0.1	3.4
	Ocp	1.1	1.6	1.9	0.0	9.3	1.5	1.0	15.7	8.7	20.4
16 hours	Pro	3.9	40.3	19.7	1.9	11.7	12.6	4.2	2.1	0.1	3.5
	Ocp	1.1	1.5	2.0	4.5	11.3	1.6	1.2	11.9	11.7	27.5

Legend

- Pro.** Proportion of vehicles in % (Sum may not add up to 100% due to figure rounding)
Ocp. Average occupancy of vehicles
M&H Medium and Heavy